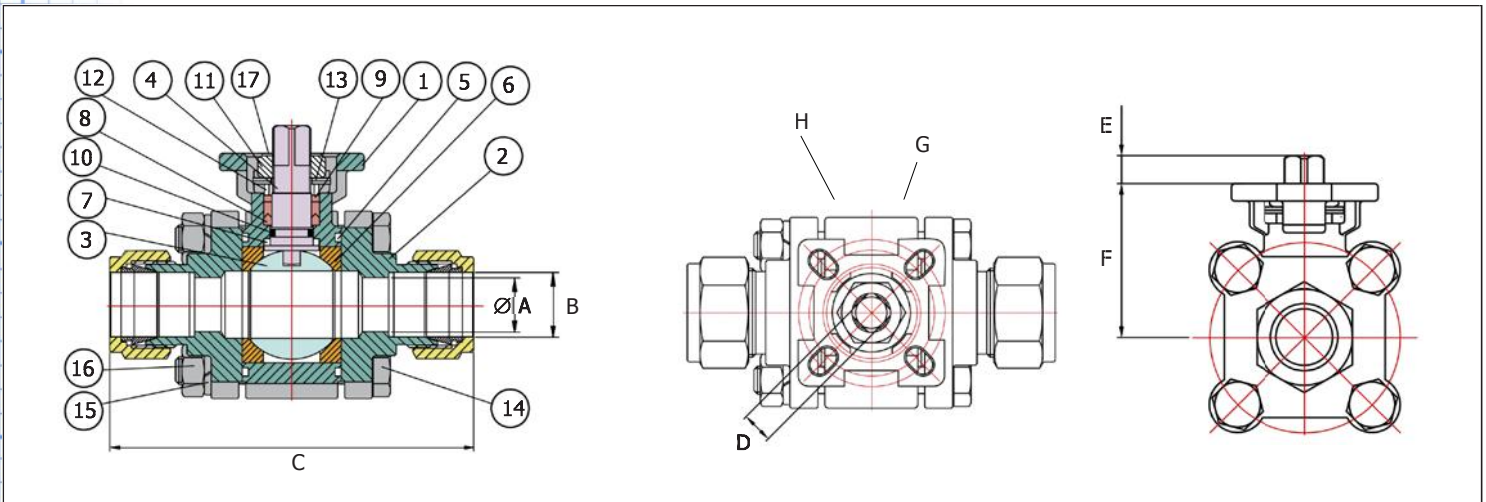


SERIES 1300 2000PSI 2-Way 3-Piece Stainless Steel Standard Port Instrument Valve

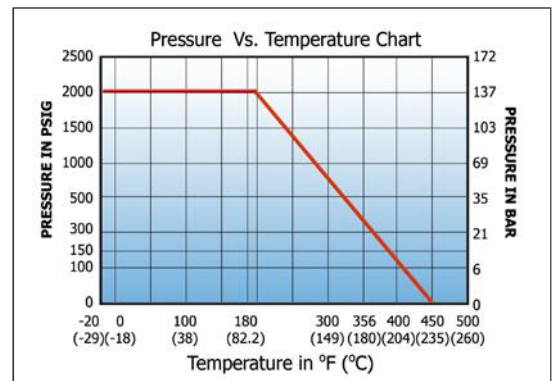
2000PSI CF8M S.S. Direct Mount Valve with TFM1600 Seats and Viton Seals



- ISO-5211 Mounting Pad
- Compression Ends with Heat Treated Ferrules
- Working pressure to 2000 PSI
- Temperature range -40° F to 450° F
- High Performance Adjustable Packing
- Bi-Directional Flow
- Extremely High Cycle Life
- Sizes 1/4" to 3/4"



| NO. | PART NAME | MATERIAL | N PCS. |
|-----|-------------------|---------------|--------|
| 1 | Body | CF8M | 1 |
| 2 | End Cap | CF8M | 2 |
| 3 | Ball | SS316 | 1 |
| 4 | Stem | SS316 | 1 |
| 5 | Packing | PTFE | 2 |
| 6 | Seat | TFM1600 | 2 |
| 7 | Stem Seal | PTFE | 1 |
| 8 | V-Ring Packing | PTFE | 1set |
| 9 | Bushing | 50%SS/50%PTFE | 1 |
| 10 | O-Ring | VITON | 1 |
| 11 | Stem Nut | SS304 | 1 |
| 12 | Gland | SS304 | 1 |
| 13 | Belleville Washer | SS304 | 2 |
| 14 | Bolt | SS304 | 4 |
| 15 | Washer | SS304 | 4 |
| 16 | Bolt Nut | SS304 | 4 |
| 17 | Lock saddle | SS304 | 1 |



| Size | Ø A | B | C | D | E | F | G | H | Cv | Break Torque in/Lb | W (Lb) |
|------|------|------|------|------|------|------|--------------|--------------|-----|--------------------|--------|
| 1/4" | 0.18 | 0.26 | 3.74 | 0.35 | .035 | 1.60 | F03 1.42" | F04 1.65" | 5.3 | 46 | 0.8 |
| 3/8" | 0.25 | 0.38 | 3.79 | 0.35 | 0.35 | 1.60 | F03 1.42" | F04 1.65" | 8 | 46 | 0.9 |
| 1/2" | 0.37 | 0.51 | 4.02 | 0.35 | 0.35 | 1.60 | F03 1.42" | F04 1.65" | 19 | 46 | 0.9 |
| 3/4" | 0.63 | 0.75 | 4.02 | 0.35 | 0.35 | 1.72 | F03 1.42" | F04 1.65" | 35 | 58 | 1.2 |

DIMENSIONS (in)

8P1300 2000PSI Direct Mount, 2-Way 3-Piece S.S. Instrument Valve with DA Pneumatic Actuator

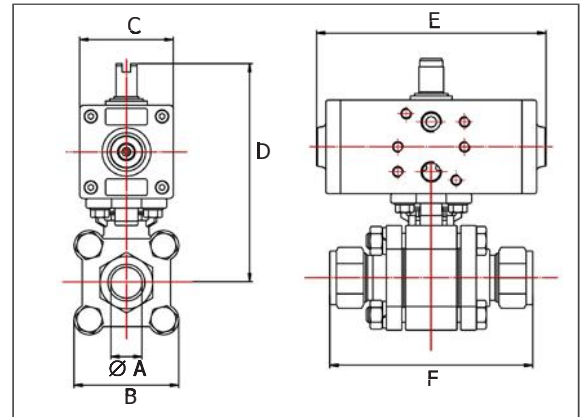
8P1302 2000PSI Direct Mount, 2-Way 3-Piece S.S. Instrument Valve with SR Pneumatic Actuator



Valve with Double Acting Actuator

| Size | Ø A | B | C | D | E | F | Wt. | Act. |
|------|------|------|------|------|------|------|-----|------|
| 1/4" | 0.18 | 1.68 | 1.78 | 4.15 | 4.33 | 3.74 | 1.9 | DA32 |
| 3/8" | 0.25 | 1.77 | 1.78 | 4.15 | 4.33 | 3.79 | 2.0 | DA32 |
| 1/2" | 0.37 | 1.92 | 1.78 | 4.15 | 4.33 | 4.02 | 2.0 | DA32 |
| 3/4" | 0.64 | 2.15 | 1.78 | 4.28 | 4.33 | 4.02 | 2.3 | DA32 |

Dimensions (in)



Valve with Spring Return Actuator

| Size | Ø A | B | C | D | E | F | Wt. | Act. |
|------|------|------|------|------|------|------|-----|------|
| 1/4" | 0.18 | 1.68 | 2.80 | 5.11 | 5.49 | 3.74 | 3.5 | SR52 |
| 3/8" | 0.25 | 1.77 | 2.80 | 5.11 | 5.49 | 3.79 | 3.6 | SR52 |
| 1/2" | 0.37 | 1.92 | 2.80 | 5.11 | 5.49 | 4.02 | 3.6 | SR52 |
| 3/4" | 0.64 | 2.15 | 2.80 | 5.24 | 5.49 | 4.02 | 5.2 | SR63 |

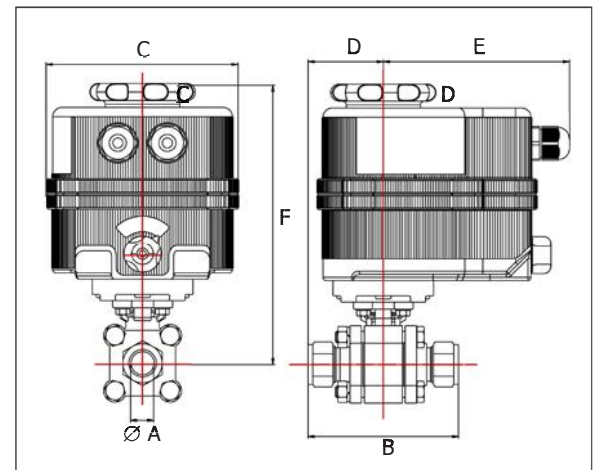
Dimensions (in)

8E1300-*** 2000PSI Direct Mount, 2-Way 3-Piece S.S. Instrument Valve with Electric Actuator

| *** = Electric Supply Order Suffix | |
|------------------------------------|-----|
| Standard | |
| 12VDC | 001 |
| 24V AC/DC | 002 |
| 100-240VAC | 003 |

| Fail Safe | |
|------------|-----|
| 12VDC | N/A |
| 24V AC/DC | 012 |
| 100-240VAC | 013 |

| Positioner | |
|------------|-----|
| 12VDC | 021 |
| 24V AC/DC | 022 |
| 100-240VAC | 023 |



Standard On/Off Electric Actuator

| Size | Ø A | B | C | D | E | Wt. | Act. |
|------|------|------|------|------|------|-----|-------|
| 1/4" | 0.18 | 3.74 | 4.84 | 1.87 | 4.74 | 3.8 | VB015 |
| 3/8" | 0.25 | 3.79 | 4.84 | 1.90 | 4.74 | 3.9 | VB015 |
| 1/2" | 0.37 | 4.02 | 4.84 | 2.01 | 4.74 | 3.9 | VB015 |
| 3/4" | 0.69 | 4.02 | 4.84 | 2.01 | 4.74 | 4.3 | VB015 |

Dimensions (in)

Fail-Safe/Positioner Actuation

| Size | Ø A | B | C | D | E | Wt. | Act. |
|------|------|------|------|------|------|-----|-------|
| 1/4" | 0.18 | 3.74 | 6.18 | 2.38 | 5.12 | 5.9 | VB030 |
| 3/8" | 0.25 | 3.79 | 6.18 | 2.38 | 5.12 | 6.0 | VB030 |
| 1/2" | 0.37 | 4.02 | 6.18 | 2.38 | 5.12 | 6.0 | VB030 |
| 3/4" | 0.64 | 4.02 | 6.18 | 2.38 | 5.12 | 6.3 | VB030 |

Dimensions (in)